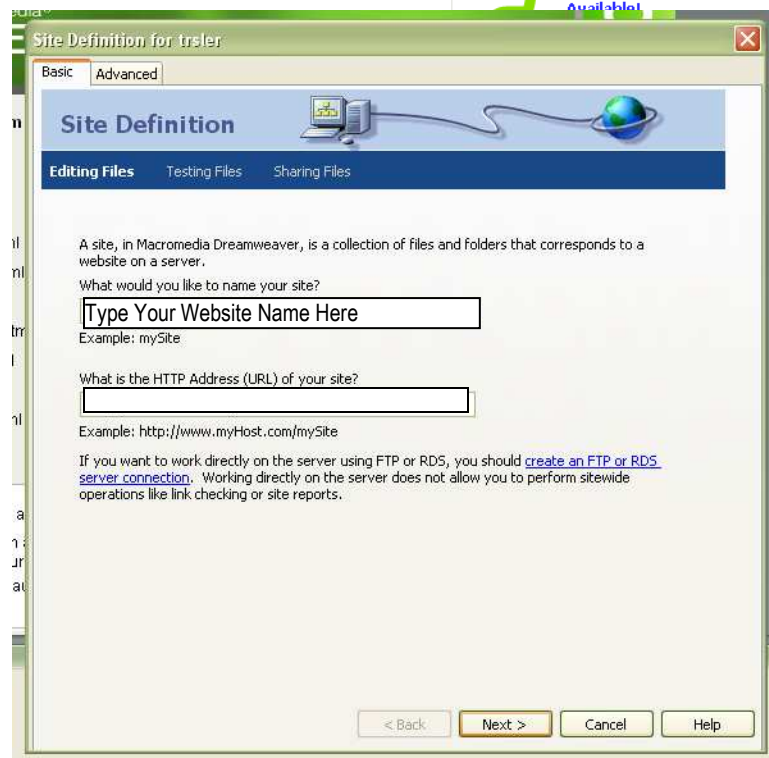
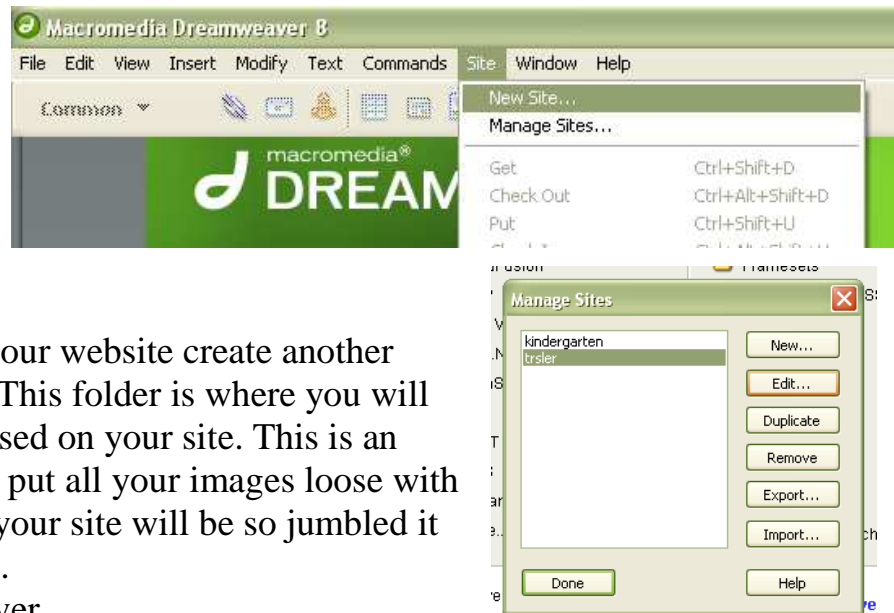


Setting Up Your Website in Dreamweaver

1. Make a folder in your folder you created in *My Documents* named *Practice Webs*. Each website should have a folder inside that folder.
2. Inside the folder for your website create another folder called *images*. This folder is where you will place all the images used on your site. This is an important step. If you put all your images loose with your other files soon your site will be so jumbled it will be hard to update.
3. Now start Dreamweaver. The first thing you must do in Dreamweaver is set up a site. You should only have to do this one time on your machine. This helps Dreamweaver to organize the files used in this site. In Dreamweaver go to Site -> Manage Sites in the menu.
4. Choose the [New] button in the popup window. If you had already defined a site and just needed to update information, you would have chosen the [Edit] button.
5. For now we will use the Basic tab.
6. Give your site a name and leave the HTTP box blank.

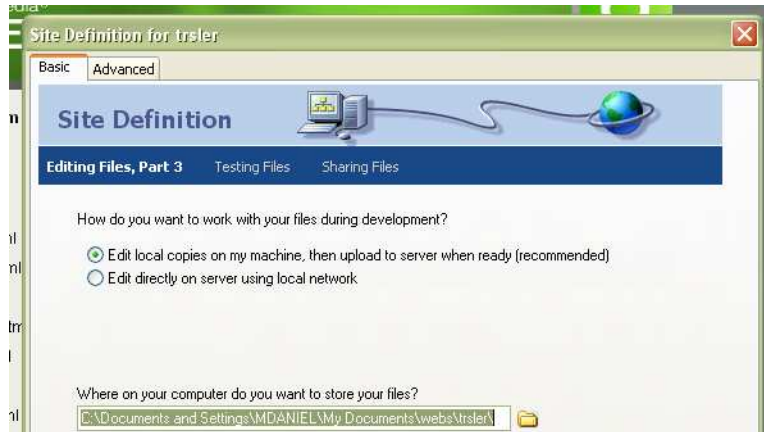


7. Click *Next*.
8. We are not using server technology so the answer on the next page is always *no*.
9. Click *Next*.
10. Choose to *Edit local copies on my machine....*



This Answer is ALWAYS no.

11. Now you click on the small icon of a folder and navigate to the folder you made in your folder step 1.
12. Now you will set up how Dreamweaver will upload your web pages to the internet so people can see them.



Click on this folder and navigate to where you save your website on your computer.

13. We use FTP to upload our files to the web server and the FTP hostname is *thericeschool.org*.



Choose none from the drop-down menu.

14. Click *Next*.
15. Check No, do not enable check in and out.
16. Click *Next* and you should then be taken to the open site management screen and you click *Done*. That's it – you're done. Now you can create and edit your webpages!



©Marty Daniel